



SecureCare®

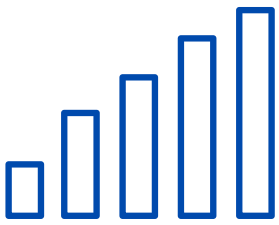
CLINICAL REVIEW PROCESS

UNIQUE PHILOSOPHY



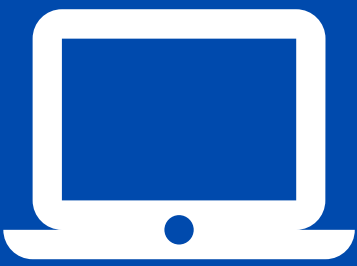
SecureCare's Clinical Review objective is to ensure all in-network providers utilize an appropriate level of care for patients from a clinical necessity standpoint. SecureCare does not determine the appropriateness of care by a prior authorization process. Instead, we provide oversight through a retrospective data analysis.

BENCHMARK DETERMINATION



A retrospective analysis of a payer's historical claims data creates a statistically valid sample size to develop clinical benchmarks. These are defined as a target for a clinic's patient population by line of business, and when exceeded, initiates an in-depth medical record review. Benchmarks are not an average per patient, but a cumulative average of all patients seen during a 12-month period.

MONTHLY REPORTING



Each month, SecureCare posts report cards through our Provider Portal for clinics and providers. Report cards display key performance metrics as well as a comparison to their peers in the network. Providers who remain within the set clinical benchmark are free to practice with minimal oversight.

OUTLIER STATUS



Providers who exceed set clinical benchmarks are defined as outliers. Chart reviews are performed on these clinics by licensed peers based on "Best Practice Standards" to confirm outlier status and develop recommendations for the provider to become compliant.